

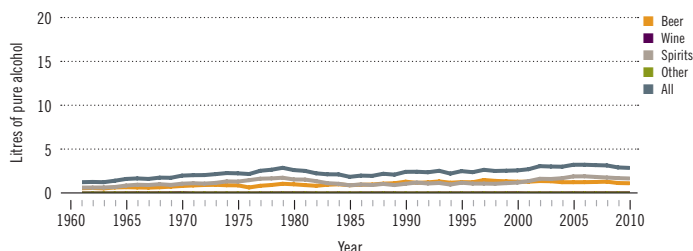
# Honduras

Total population: 7 621 000 > Population aged 15 years and older (15+): 63% > Population in urban areas: 52% > Income group (World Bank): Lower middle income

## ALCOHOL CONSUMPTION: LEVELS AND PATTERNS

Recorded alcohol per capita (15+) consumption, 1961–2010

Data refer to litres of pure alcohol per capita (15+).



Alcohol per capita (15+) consumption (in litres of pure alcohol)

	Average 2003–2005	Average 2008–2010	Change
Recorded	3.1	3.0	→
Unrecorded	1.4	1.0	↘
<b>Total</b>	<b>4.5</b>	<b>4.0</b>	↘
Total males / females		5.7 / 2.3	
WHO Region of the Americas	9.2	8.4	

Prevalence of heavy episodic drinking\* (%), 2010

	Population	Drinkers only
Males (15+)	8.0	13.6
Females (15+)	0.2	0.6
Both sexes (15+)	4.1	8.6

\*Consumed at least 60 grams or more of pure alcohol on at least one occasion in the past 30 days.

## HEALTH CONSEQUENCES: MORTALITY AND MORBIDITY

Age-standardized death rates (ASDR) and alcohol-attributable fractions (AAF), 2012

	ASDR*		AAF (%)	
	26.3	14.7	37.5	49.7
Liver cirrhosis, males / females	38.9	14.8	22.0	8.8
Road traffic accidents, males / females				

\*Per 100 000 population (15+).

Years of life lost (YLL) score\*, 2012

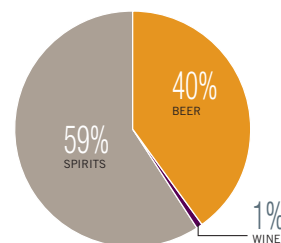
LEAST < 1 2 3 4 5 > MOST

\*Based on alcohol-attributable years of life lost.

## POLICIES AND INTERVENTIONS

Written national policy (adopted/revised) / National action plan	No / —
Excise tax on beer / wine / spirits	Yes / Yes / Yes
National legal minimum age for off-premise sales of alcoholic beverages (beer / wine / spirits)	18 / 18 / 18
National legal minimum age for on-premise sales of alcoholic beverages (beer / wine / spirits)	18 / 18 / 18
Restrictions for on-/off-premise sales of alcoholic beverages:	
Hours, days / places, density	Yes, No / No, No
Specific events / intoxicated persons / petrol stations	No / Yes / No

Recorded alcohol per capita (15+) consumption (in litres of pure alcohol) by type of alcoholic beverage, 2010



Total alcohol per capita (15+) consumption, drinkers only (in litres of pure alcohol), 2010

Males (15+)	9.7
Females (15+)	6.4
Both sexes (15+)	8.4

Abstainers (%), 2010

	Males	Females	Both sexes
Lifetime abstainers (15+)	19.7	43.5	31.8
Former drinkers* (15+)	21.2	20.5	20.9
Abstainers (15+), past 12 months	40.9	64.1	52.6

\*Persons who used to drink alcoholic beverages but have not done so in the past 12 months.

Patterns of drinking score, 2010

LEAST RISKY < 1 2 3 4 5 > MOST RISKY

Prevalence of alcohol use disorders and alcohol dependence (%), 2010\*

	Alcohol use disorders**	Alcohol dependence
Males	8.0	3.9
Females	3.2	1.8
Both sexes	5.5	2.9
WHO Region of the Americas	6.0	3.4

\*12-month prevalence estimates (15+).

\*\*Including alcohol dependence and harmful use of alcohol.

National maximum legal blood alcohol concentration (BAC) when driving a vehicle (general / young / professional), in %	0.07 / 0.07 / 0.07
Legally binding regulations on alcohol advertising / product placement	Yes / No
Legally binding regulations on alcohol sponsorship / sales promotion	No / No
Legally required health warning labels on alcohol advertisements / containers	Yes / Yes
National government support for community action	Yes
National monitoring system(s)	No