

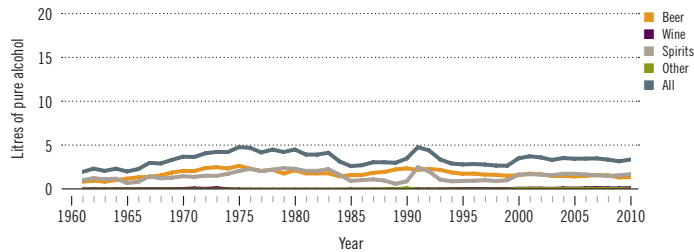
Jamaica

Total population: 2 741 000 > Population aged 15 years and older (15+): 71% > Population in urban areas: 52% > Income group (World Bank): Upper middle income

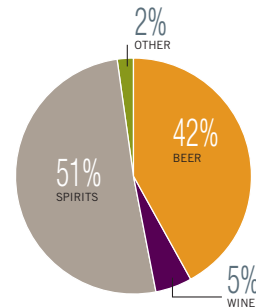
ALCOHOL CONSUMPTION: LEVELS AND PATTERNS

Recorded alcohol per capita (15+) consumption, 1961–2010

Data refer to litres of pure alcohol per capita (15+).



Recorded alcohol per capita (15+) consumption (in litres of pure alcohol) by type of alcoholic beverage, 2010



Alcohol per capita (15+) consumption (in litres of pure alcohol)

	Average 2003–2005	Average 2008–2010	Change
Recorded	3.5	3.4	→
Unrecorded	1.5	1.5	→
Total	5.0	4.9	→
Total males / females		7.1 / 2.8	
WHO Region of the Americas	9.2	8.4	

Total alcohol per capita (15+) consumption, drinkers only (in litres of pure alcohol), 2010

Males (15+)	12.5
Females (15+)	7.8
Both sexes (15+)	10.6

Abstainers (%), 2010

	Males	Females	Both sexes
Lifetime abstainers (15+)	20.0	44.1	32.4
Former drinkers* (15+)	23.2	20.5	21.8
Abstainers (15+), past 12 months	43.3	64.6	54.2

*Persons who used to drink alcoholic beverages but have not done so in the past 12 months.

Prevalence of heavy episodic drinking* (%), 2010

	Population	Drinkers only
Males (15+)	11.9	21.0
Females (15+)	2.1	5.9
Both sexes (15+)	6.9	15.0

*Consumed at least 60 grams or more of pure alcohol on at least one occasion in the past 30 days.

Patterns of drinking score, 2010

LEAST RISKY < 1 2 3 4 5 > MOST RISKY

HEALTH CONSEQUENCES: MORTALITY AND MORBIDITY

Age-standardized death rates (ASDR) and alcohol-attributable fractions (AAF), 2012

	ASDR*		AAF (%)	
Liver cirrhosis, males / females	9.8	2.9	41.0	43.8
Road traffic accidents, males / females	23.3	7.7	5.2	1.9

*Per 100 000 population (15+).

Prevalence of alcohol use disorders and alcohol dependence (%), 2010*

	Alcohol use disorders**	Alcohol dependence
Males	6.5	2.5
Females	1.8	0.5
Both sexes	4.1	1.5
WHO Region of the Americas	6.0	3.4

*12-month prevalence estimates (15+).

**Including alcohol dependence and harmful use of alcohol.

Years of life lost (YLL) score*, 2012

LEAST < 1 2 3 4 5 > MOST

*Based on alcohol-attributable years of life lost.

POLICIES AND INTERVENTIONS

Written national policy (adopted/revised) / National action plan	No / —
Excise tax on beer / wine / spirits	Yes / Yes / Yes
National legal minimum age for off-premise sales of alcoholic beverages (beer / wine / spirits)	18 / 18 / 18
National legal minimum age for on-premise sales of alcoholic beverages (beer / wine / spirits)	18 / 18 / 18
Restrictions on on-/off-premise sales of alcoholic beverages: Hours, days / places, density Specific events / intoxicated persons / petrol stations	Yes, No / No, No No / No / No

National maximum legal blood alcohol concentration (BAC) when driving a vehicle (general / young / professional), in %	0.08 / 0.08 / 0.08
Legally binding regulations on alcohol advertising / product placement	Yes / Yes
Legally binding regulations on alcohol sponsorship / sales promotion	No / No
Legally required health warning labels on alcohol advertisements / containers	No / No
National government support for community action	No
National monitoring system(s)	Yes