

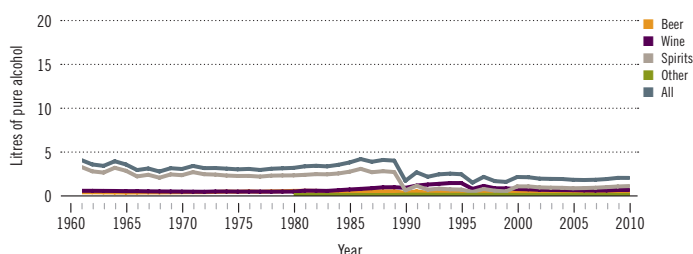
# Lebanon

Total population: 4 341 000 ► Population aged 15 years and older (15+): 76% ► Population in urban areas: 87% ► Income group (World Bank): Upper middle income

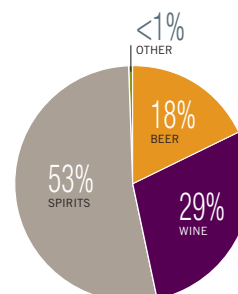
## ALCOHOL CONSUMPTION: LEVELS AND PATTERNS

Recorded alcohol per capita (15+) consumption, 1961–2010

Data refer to litres of pure alcohol per capita (15+).



Recorded alcohol per capita (15+) consumption (in litres of pure alcohol) by type of alcoholic beverage, 2010



Alcohol per capita (15+) consumption (in litres of pure alcohol)

	Average 2003–2005	Average 2008–2010	Change
Recorded	1.8	1.9	→
Unrecorded	0.5	0.5	→
<b>Total</b>	<b>2.3</b>	<b>2.4</b>	<b>→</b>
Total males / females		3.9 / 0.8	
WHO Eastern Mediterranean Region total	0.7	0.7	

Total alcohol per capita (15+) consumption, drinkers only (in litres of pure alcohol), 2010

Males (15+)	30.9
Females (15+)	11.1
Both sexes (15+)	23.9

Prevalence of heavy episodic drinking\* (%), 2010

	Population	Drinkers only
Males (15+)	0.1	0.9
Females (15+)	<0.1	0.4
Both sexes (15+)	0.1	0.7

\*Consumed at least 60 grams or more of pure alcohol on at least one occasion in the past 30 days.

Abstainers (%), 2010

	Males	Females	Both sexes
Lifetime abstainers (15+)	72.8	85.2	78.8
Former drinkers* (15+)	14.5	7.4	11.0
Abstainers (15+), past 12 months	87.3	92.6	89.9

\*Persons who used to drink alcoholic beverages but have not done so in the past 12 months.

Patterns of drinking score, 2010

LEAST RISKY < 1 2 3 4 5 > MOST RISKY

## HEALTH CONSEQUENCES: MORTALITY AND MORBIDITY

Age-standardized death rates (ASDR) and alcohol-attributable fractions (AAF), 2012

	ASDR*		AAF (%)	
	8.2	3.6	17.3	19.6
Liver cirrhosis, males / females	31.2	13.4	8.3	2.4

\*Per 100 000 population (15+).

Prevalence of alcohol use disorders and alcohol dependence (%), 2010\*

	Alcohol use disorders**	Alcohol dependence
Males	1.4	0.6
Females	0.1	<0.1
Both sexes	0.8	0.3
WHO Eastern Mediterranean Region	0.3	0.2

\*12-month prevalence estimates (15+).

\*\*Including alcohol dependence and harmful use of alcohol.

Years of life lost (YLL) score\*, 2012

LEAST < 1 2 3 4 5 > MOST

\*Based on alcohol-attributable years of life lost.

## POLICIES AND INTERVENTIONS

Written national policy (adopted/revised) / National action plan	— / —
Excise tax on beer / wine / spirits	— / — / —
National legal minimum age for off-premise sales of alcoholic beverages (beer / wine / spirits)	— / — / —
National legal minimum age for on-premise sales of alcoholic beverages (beer / wine / spirits)	— / — / —
Restrictions for on-/off-premise sales of alcoholic beverages: Hours, days / places, density	— / —
Specific events / intoxicated persons / petrol stations	— / — / —

National maximum legal blood alcohol concentration (BAC) when driving a vehicle (general / young / professional), in %	— / — / —
Legally binding regulations on alcohol advertising / product placement	— / —
Legally binding regulations on alcohol sponsorship / sales promotion	— / —
Legally required health warning labels on alcohol advertisements / containers	— / —
National government support for community action	—
National monitoring system(s)	—