

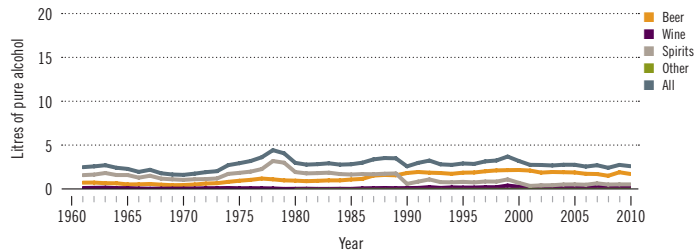
# Mauritius

Total population: 1 231 000 ➤ Population aged 15 years and older (15+): 79% ➤ Population in urban areas: 42% ➤ Income group (World Bank): Upper middle income

## ALCOHOL CONSUMPTION: LEVELS AND PATTERNS

### Recorded alcohol per capita (15+) consumption, 1961–2010

Data refer to litres of pure alcohol per capita (15+).



### Recorded alcohol per capita (15+) consumption (in litres of pure alcohol) by type of alcoholic beverage, 2010



### Alcohol per capita (15+) consumption (in litres of pure alcohol)

	Average 2003–2005	Average 2008–2010	Change
Recorded	2.8	2.6	➔
Unrecorded	1.0	1.0	➔
<b>Total</b>	<b>3.8</b>	<b>3.6</b>	➔
Total males / females		5.9 / 1.4	
WHO African Region	6.2	6.0	

### Total alcohol per capita (15+) consumption, drinkers only (in litres of pure alcohol), 2010

Males (15+)	13.2
Females (15+)	7.2
Both sexes (15+)	11.3

### Prevalence of heavy episodic drinking\* (%), 2010

	Population	Drinkers only
Males (15+)	21.2	47.6
Females (15+)	5.1	25.6
Both sexes (15+)	13.0	40.7

\*Consumed at least 60 grams or more of pure alcohol on at least one occasion in the past 30 days.

### Abstainers (%), 2010

	Males	Females	Both sexes
Lifetime abstainers (15+)	41.8	69.4	55.8
Former drinkers* (15+)	13.6	10.8	12.2
Abstainers (15+), past 12 months	55.4	80.2	68.0

\*Persons who used to drink alcoholic beverages but have not done so in the past 12 months.

### Patterns of drinking score, 2010

LEAST RISKY < 1 2 3 4 5 > MOST RISKY

## HEALTH CONSEQUENCES: MORTALITY AND MORBIDITY

### Age-standardized death rates (ASDR) and alcohol-attributable fractions (AAF), 2012

	ASDR*		AAF (%)	
	ASDR*	AAF (%)	ASDR*	AAF (%)
Liver cirrhosis, males / females	30.9 / 6.4	51.7 / 49.8		
Road traffic accidents, males / females	29.7 / 4.0	15.5 / 3.4		

\*Per 100 000 population (15+).

### Years of life lost (YLL) score\*, 2012

LEAST < 1 2 3 4 5 > MOST

\*Based on alcohol-attributable years of life lost.

### Prevalence of alcohol use disorders and alcohol dependence (%), 2010\*

	Alcohol use disorders**	Alcohol dependence
Males	7.9	3.3
Females	1.2	0.6
Both sexes	4.5	1.9
WHO African Region	3.3	1.4

\*12-month prevalence estimates (15+).

\*\*Including alcohol dependence and harmful use of alcohol.

## POLICIES AND INTERVENTIONS

Written national policy (adopted/revised) / National action plan	No / —
Excise tax on beer / wine / spirits	Yes / Yes / Yes
National legal minimum age for off-premise sales of alcoholic beverages (beer / wine / spirits)	18 / 18 / 18
National legal minimum age for on-premise sales of alcoholic beverages (beer / wine / spirits)	18 / 18 / 18
Restrictions for on-/off-premise sales of alcoholic beverages: Hours, days / places, density Specific events / intoxicated persons / petrol stations	Yes, No / Yes, No No / No / No

National maximum legal blood alcohol concentration (BAC) when driving a vehicle (general / young / professional), in %	0.05 / 0.05 / 0.05
Legally binding regulations on alcohol advertising / product placement	Yes / Yes
Legally binding regulations on alcohol sponsorship / sales promotion	Yes / Yes
Legally required health warning labels on alcohol advertisements / containers	Yes / Yes
National government support for community action	Yes
National monitoring system(s)	No