

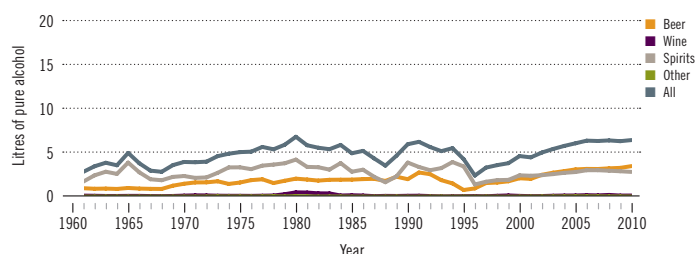
Trinidad and Tobago

Total population: 1 328 000 ► Population aged 15 years and older (15+): 79% ► Population in urban areas: 14% ► Income group (World Bank): High income

ALCOHOL CONSUMPTION: LEVELS AND PATTERNS

Recorded alcohol per capita (15+) consumption, 1961–2010

Data refer to litres of pure alcohol per capita (15+).



Alcohol per capita (15+) consumption (in litres of pure alcohol)

	Average 2003–2005	Average 2008–2010	Change
Recorded	5.8	6.4	↗
Unrecorded	0.5	0.3	→
Total	6.3	6.7	↗
Total males / females		9.7 / 3.9	
WHO Region of the Americas	9.2	8.4	

Prevalence of heavy episodic drinking* (%), 2010

	Population	Drinkers only
Males (15+)	31.3	50.4
Females (15+)	9.9	24.4
Both sexes (15+)	20.4	39.9

*Consumed at least 60 grams or more of pure alcohol on at least one occasion in the past 30 days.

HEALTH CONSEQUENCES: MORTALITY AND MORBIDITY

Age-standardized death rates (ASDR) and alcohol-attributable fractions (AAF), 2012

	ASDR*		AAF (%)	
	17.3	5.1	58.9	54.0
Liver cirrhosis, males / females	28.8	13.6	12.6	4.9
Road traffic accidents, males / females	*Per 100 000 population (15+).			

*Per 100 000 population (15+).

Years of life lost (YLL) score*, 2012

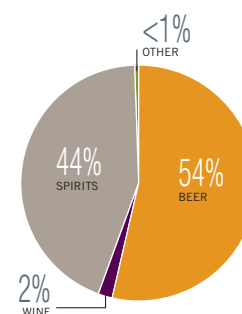
LEAST < 1 2 3 4 5 > MOST

*Based on alcohol-attributable years of life lost.

POLICIES AND INTERVENTIONS

Written national policy (adopted/revised) / National action plan	No / —
Excise tax on beer / wine / spirits	Yes / Yes / Yes
National legal minimum age for off-premise sales of alcoholic beverages (beer / wine / spirits)	18 / 18 / 18
National legal minimum age for on-premise sales of alcoholic beverages (beer / wine / spirits)	18 / 18 / 18
Restrictions for on-/off-premise sales of alcoholic beverages: Hours, days / places, density Specific events / intoxicated persons / petrol stations	Yes, Yes / Yes, No Yes / Yes / No

Recorded alcohol per capita (15+) consumption (in litres of pure alcohol) by type of alcoholic beverage, 2010



Total alcohol per capita (15+) consumption, drinkers only (in litres of pure alcohol), 2010

Males (15+)	15.6
Females (15+)	9.6
Both sexes (15+)	13.2

Abstainers (%), 2010

	Males	Females	Both sexes
Lifetime abstainers (15+)	16.7	38.9	28.0
Former drinkers* (15+)	21.2	20.7	21.0
Abstainers (15+), past 12 months	37.9	59.6	48.9

*Persons who used to drink alcoholic beverages but have not done so in the past 12 months.

Patterns of drinking score, 2010

LEAST RISKY < 1 2 3 4 5 > MOST RISKY

Prevalence of alcohol use disorders and alcohol dependence (%), 2010*

	Alcohol use disorders**	Alcohol dependence
Males	8.1	3.8
Females	3.1	1.8
Both sexes	5.6	2.8
WHO Region of the Americas	6.0	3.4

*12-month prevalence estimates (15+).

**Including alcohol dependence and harmful use of alcohol.